



Generalitat de Catalunya
**Departament
de Justícia**

JUVENILE JUSTICE

CATALONIA

JUVENILE JUSTICE DIRECTORATE
Department of Justice
Generalitat de Catalunya

GENERAL OVERVIEW - CATALONIA

- CAT -7.403.879 inhabitants (16,2% of Spanish population- 19% of Gross Domestic Product)
- Young people from 14 to 17 years: Catalonia 285.273
- Parliamentary monarchy
- 1 central government and 17 « Autonomic Communities »

The juvenile justice laws - history-

- 1918 (Bilbao), 1919 (Tarragona), 1921 (Barcelona), the birth of TTMM

- »1936-1939 Civil War

- 1948, reform and continuity of the protective model

- »1978 Constitution

- 1992, reform according to the constitutional rights

- 2000, new legal regulation

- Legal framework for the Criminal Justice System:

Constitution of Spain - Penal Code - LEC (Criminal Prosecution Law) - LO 5/00 of liability of the minors

GENERAL OVERVIEW OF THE LO 5/00

- Came into force in January, 2001
- Ages: 14/17
- Principles:
 - Formally penal but materially punishing-educational
 - Acknowledgement of all constitutional guarantees
 - Distinction of age groups (14/15 – 16/17)
 - Opportunity principle with mechanisms to avoid proceedings, keep them from continuing, suspend the execution of the sentence (up to two years) or modify.
 - Flexibility in the adoption and the execution of the measures
 - Competencies of Autonomous Communities on the execution of sentences
 - Judicial control of the execution

LO 5/2000 penal responsibility of minors

Crime	Age	Measures and their duration	Review of the measure
Misdemeanors	14-17	<input type="checkbox"/> Warning <input type="checkbox"/> Weekends (up to 4) <input type="checkbox"/> Comm. serv. (50 h. max.) <input type="checkbox"/> Suspension of permits or licenses (1 year max.)	Before and during enforcement
Crimes unaggravated by violence or intimidation	14-17	<input type="checkbox"/> All measures except for internment in a closed center. <input type="checkbox"/> Comm. serv. (100 h. max.) <input type="checkbox"/> Weekends (up to 8) <input type="checkbox"/> Remaining measures (2 years max.)	Before and during enforcement
Crimes aggravated by violence or intimidation	14-15	All measures <input type="checkbox"/> Comm. serv. (100 h. max.) <input type="checkbox"/> Weekends (up to 8) <input type="checkbox"/> Remaining measures (2 years max)	Before and during enforcement
	16-17	All measures <input type="checkbox"/> Comm. serv. (200 h. max.) <input type="checkbox"/> Weekends (up to 16) <input type="checkbox"/> Remaining measures (5 years max)	Before and during enforcement
Extreme seriousness (recurrence in violent crimes)	14-15	All measures <input type="checkbox"/> Comm. serv. (100 h. max.) <input type="checkbox"/> Weekends (up to 8) <input type="checkbox"/> Remaining measures (4 years max)	Before and during enforcement
	16-17	The measure for internment in a closed center from 1-8 years followed by parole (up to 5 years) must be handed down	As of 1 year of internment

TECHNICAL ORGANIZATION programs

Juvenile justice

→ **Technical Advising Program**

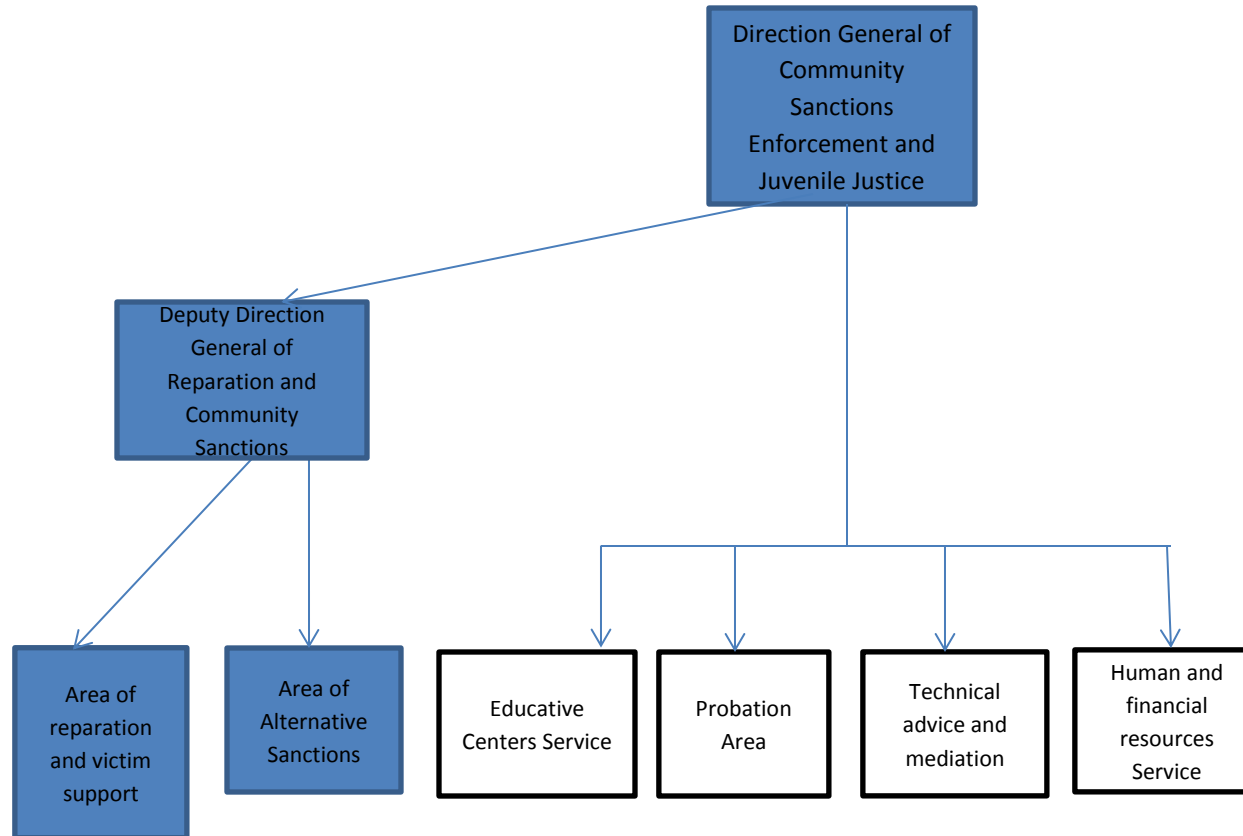
→ **Mediation Program**

→ **Program for the enforcement of community measures**

→ **Program for the enforcement of internment measures**

ADMINISTRATIVE STRUCTURE

Juvenile justice



Technical Teams	COORDINATOR	PSYCHOLOGIST	SOCIAL WORKER/EDUCATOR	MEDIATOR	VÍCTIMS CARE	TOTAL
TT Barcelona 1	1	1	4	4	1	11
TT Barcelona 2	1	3	3	2	1	10
TT Barcelona 3	1	2	4	3	1	11
TT Barcelona 4	1	2	3	3	1	10
TT Girona	1	1	3	3	1	9
TT Lleida*	1	2	2	-	-	5
TT Tarragona	1	3	3	-	-	7
TOTAL	7	14	22	15	5	63

PROBATION TEAMS	COORDINATOR	PROB. OFFICERS	PSYCHOLOGIST	TOTAL
EMO Barcelona 1	1	10	1	12
EMO Barcelona 2	1	10	1	12
EMO Barcelona 3	1	10	1	12
EMO Barcelona 4	1	11	1	13
EMO Barcelona 5	1	10	1	12
EMO Girona	1	6	1	8
EMO Lleida	1	6	1	8
EMO Tarragona	1	8	1	10
EMO Terres de l'Ebre	-	1	-	1
TOTAL	8	72	8	88

CENTRE	PLACES	MUNICIPALITY	REGIME	GENDER
CE L'Alzina	87	Palau-solità i Plegamans	Closed/Semi open	Boys
CE Can LLupià	120	Barcelona	Closed/Semi open	Boys/Girls
CE El Segre	45	Lleida	Closed/Semi open	Boys
CE Oriol Badia	14	Guardiola de Font-rubí	Semi open/Open	Boys
CE Folch i Torres	12	Granollers	Semi open/Open	Boys
CE Montilivi – Open Unit	12	Girona	Semi open/Open	Boys
CE Til·lers– Therapeutic Unit	12	Mollet del Vallès	Therapeutic	Boys/Girls
Reintegration apartment/Barcelona	5	Barcelona	Semi open/Open	Boys/Girls
TOTAL	307			

Co-ordination with community resources

juvenile justice

GENERAL DIRECTORATE

Departments
- Health
- Social Welfare
- Labour
- Education

Local Entities

**Advising
Mediation
Probation
Internment**

Private entities/NGO

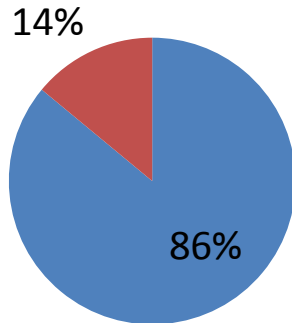
Public Entities



Profile of the population

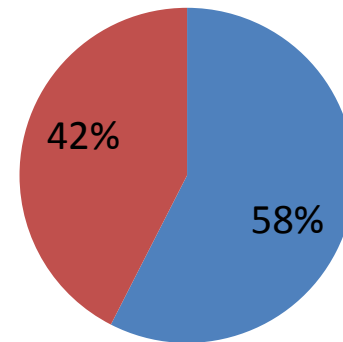
juvenile justice

2015



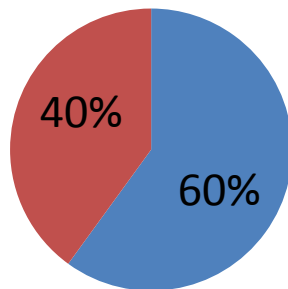
■ Man
■ Women

2015



■ 14-17 years
■ 18-21 years

2015

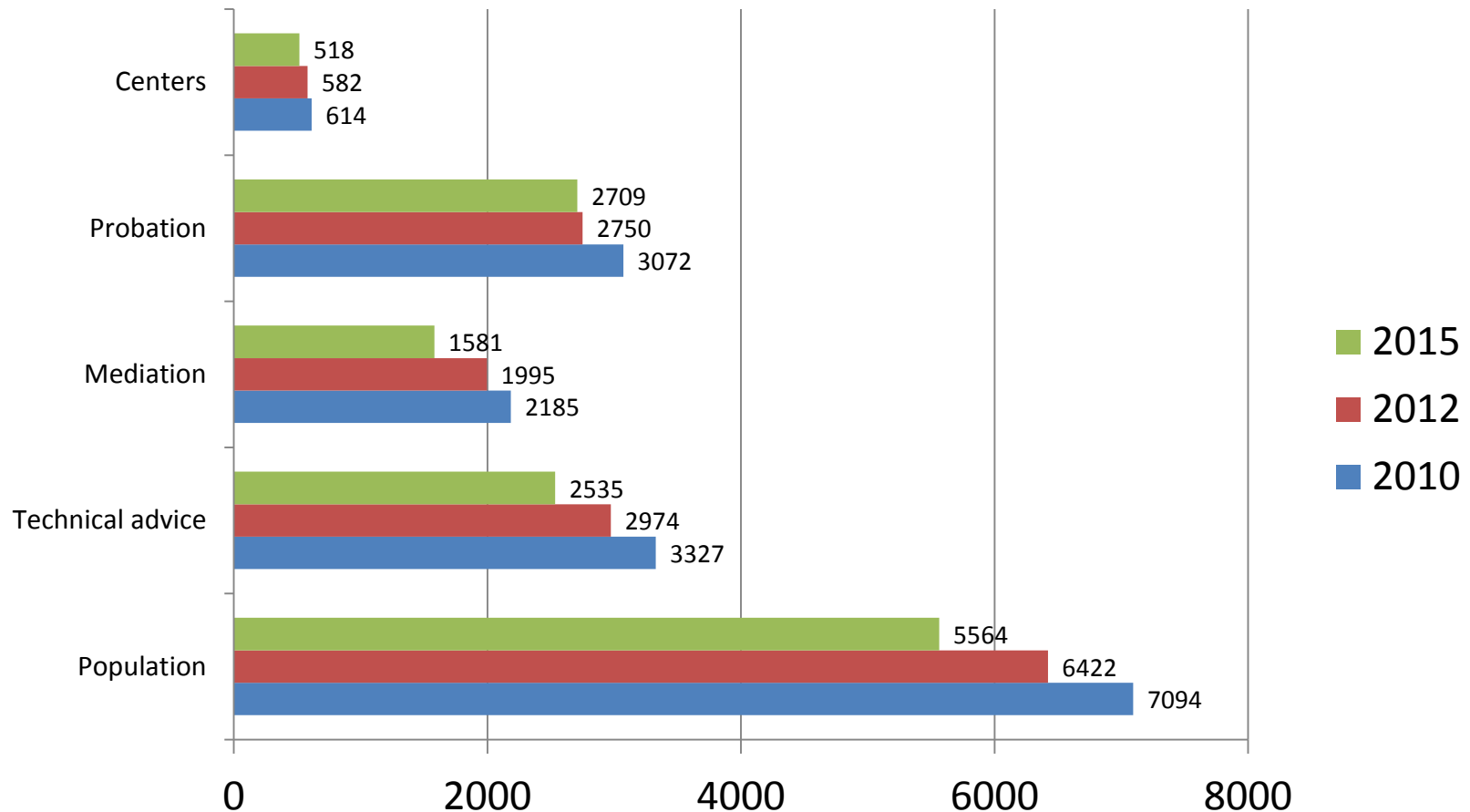


■ National
■ Foreigner

Enforcement of measures and sanctions

Comparative table

juvenile justice



Enforcement of measures and sanctions YEAR 2015

juvenile justice

Population	5564		
	Probation	2709	49%
Measures			58%
	Internment	518	9%
Mediation	1581	28%	
Pending (mediation/measures/no intervention)	756	14%	

